

## Quality Metrics Extended Meta Data

- Signal Noise Ratio (SNR)
- Scalar Quality
- Iris Focus
- Horizontal Margin Score
- Enroll Bits
- Iris Pupil Contrast
- Gray Level Spread Value (GLSV)
- Iris Radius
- Eyeness
- Iris Visibility
- Sclera Iris Contrast
- Gaze Score
- Motion BlurScalar Quality
- Eye Type (L/R)
- Iris Texture
- Vertical Margin Score
- Gaze Angle
- Pupil Iris Diameter Ratio

Iris ID's iData SDK is in its fifth generation of iris image quality assessment and template matching. As the leading provider of both small and large-scale iris programs for commercial and government applications, iData Iris SDK is fully compliant with all international iris standards and has been deployed in many multi-vendor interoperable programs. iData Iris SDK has also been tested with recognized test data sets and Iris ID is a key participant in all of NIST IREX performance tests.

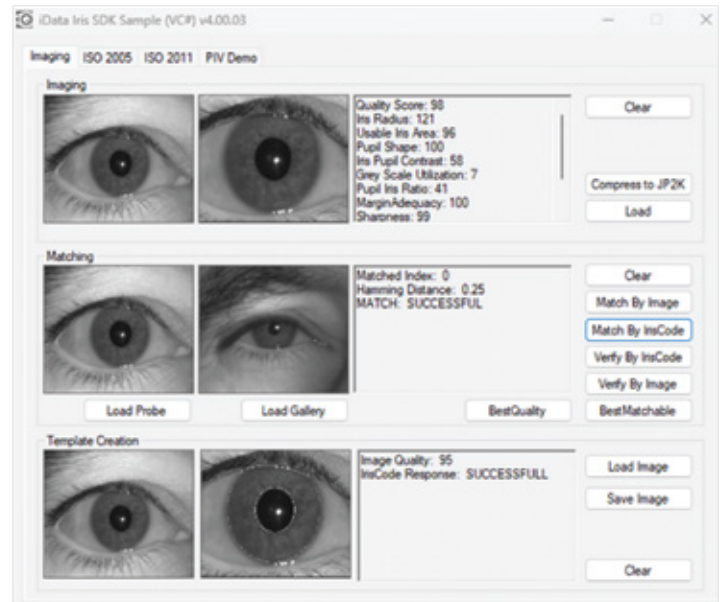
Iris ID provides image quality checking for a wide array of iris identification applications including ISO Standard and Enhanced. These standards meet the requirements for National ID, Law Enforcement, Access Control, and Time and Attendance programs.

## iData Iris SDK Attributes

- Tested and Field Proven for 20+ years
- Liveness Detection
- Lens Detection
- FED (Fake Eye Detection)
- CLD (Contact Lens Detection)
- Usable Iris Area
- ISO Image Quality Metrics
- Supports International Standards (ISO 29794-6, ICAO, PIVi, NIST SP 800-76)
- KIND images can be read/saved as: RAW, PNG, JPG, BMP

## Why Choose iData Iris SDK?

- **Versatility:** Available on multiple operating systems (Windows, LINUX, \*Android) and easily integrated into identity dependent applications
- **Programming Samples:** C/C++, C#, .NET, Java  
**Compatibility:** Works with Iris ID's Iris Accelerator large scale matching solutions
- **KIND Images:** iData Iris SDK supports all KIND 1 images and creates KIND 3 and 7 images. Compression utility included.
- **Configurable:** Supports Scalar quality, extended meta data, template generation and matching (1:1, 1:N)
- **Expert Support:** Access to professional guidance from seasoned agents.



Images captured with iCAM T10 device.



Android image quality dependent on processor capability of mobile device.



Iris ID Systems, Inc.  
8 Clarke Drive, Cranbury, NJ 08512, USA  
Tel. 609-819-IRIS(4747) Fax. 609-819-4736  
www.irisid.com



© Iris ID Systems, Inc. All rights reserved. Design and specifications subject to change.