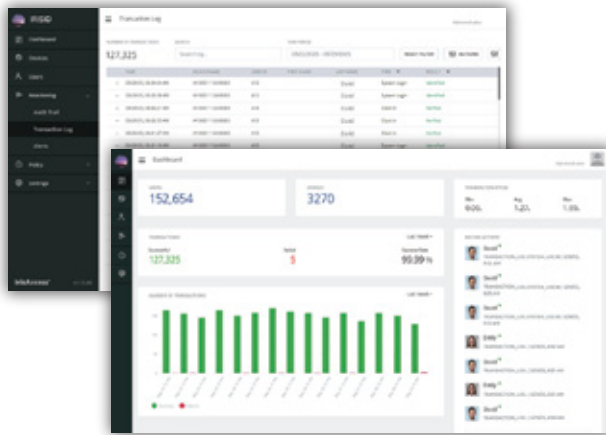


# IrisTime™ iTMS

IrisTime Management System



iTMS Dashboard

iTMS is a centralized, web-based management solution designed specifically for the iT100 series iris and face fusion biometric readers. iTMS provides out of the box integration tools to connect with workforce management applications. A sleek and intuitive graphical user interface (GUI) simplifies device management, user administration and transaction log review while also making device configuration and monitoring effortless.

Leveraging REST APIs, iTMS enables real-time data exchange, ensuring efficient and seamless management of all connected iT100 readers. Operators can easily authenticate and activate devices, track user activity, and access transaction logs-all from one convenient interface.

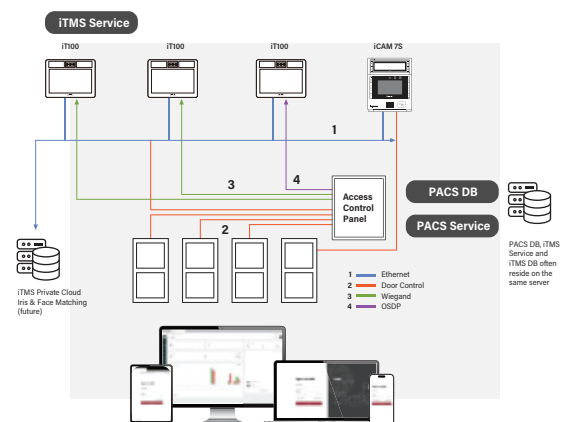
Ideal for enterprise-level deployments, iTMS supports management across multiple locations, delivering scalable and robust identification and authentication tailored to your organizational needs for workforce management.

## Responsive Design for Seamless Access

Our user interface is built with responsive design, ensuring a consistent and intuitive experience across all browser-based desktop, tablet and smartphone devices.

Leveraging over 25 years of experience, iTMS delivers best-of-breed biometric authentication with unmatched accuracy and security. Flexible architecture can support seamless integration with the world's leading Human Resource Management Systems (HRMS) platforms. iTMS can be deployed as a powerful stand-alone solution for authentication as well as access control.

iTMS is a fully automated solution for enrolling high-quality iris and face biometrics securely and seamlessly. With built-in quality control and encryption, iTMS ensures only the best results are used. Data storage and ownership remains fully under the control of the end-user organization, providing privacy, confidence, compliance, and complete data ownership.



Note: Cardholder Data from PACS can be shared to iTMS via REST API

## Advanced Security You Can Trust

The iTMS solution is built with enterprise-grade security at its core. Each instance provides secure authentication, while user data and credentials are protected with end-to-end encryption. Integrated countermeasures and tamper detection alarms in iT100 hardware ensure real-time protection against threats. All security mechanisms are designed to meet or exceed industry standards, including FIPS, ISO/IEC, and GDPR compliance requirements-delivering peace of mind for even the most security-conscious enterprises.

The iTMS Management Service is the central hub for controlling the IrisTime database and managing communications with other workforce management applications. Designed for efficiency and scalability, a single iTMS instance supports the entire network eliminating complexity and reducing overhead.

iTMS seamlessly handles the distribution of enrollment data, transaction logs, and other critical communications, ensuring fast and secure data flow across the system. Utilizing Responsive Web Design (RWD), authenticated administrators and operators can access the intuitive iTMS interface from any browser, tablet, or smartphone. The applications adapts effortlessly to any screen size, offering a consistent and user-friendly experience. From system configuration and user management to permissions and attribute-based (ABAC) access control, everything is managed in one centralized platform.

Administrators can easily define roles, assign permissions, and create operator accounts.

## User Management & Biometric Enrollment

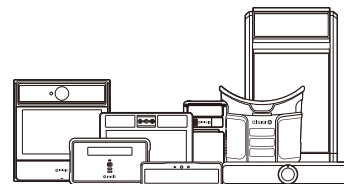
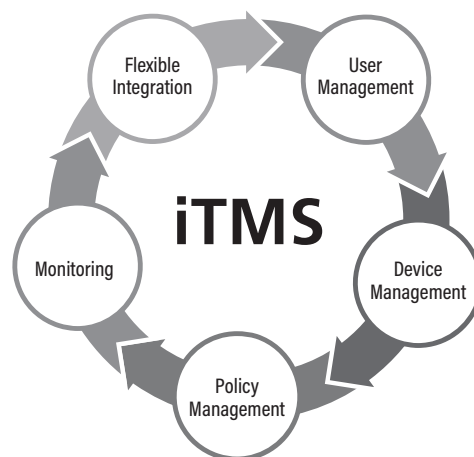
iTMS securely manages and distributes encrypted iris and face templates across all iT100 devices, ensuring fast, consistent, and scalable performance—from small deployments to thousands of users. Prox and smart cards can be linked to individual identities to support one-to-one verification and maintain strict privacy compliance. Authorized enrollment stations are fully enabled to manage users and capture biometrics, providing operational flexibility without sacrificing centralized control.

## Real Time Monitoring & Alerts

iTMS provides comprehensive real-time monitoring across your entire biometric ecosystem. Gain instant visibility into system status, user activity, transactions, network performance, and security events all from a single, intuitive interface. Built-in tamper detection, audio alerts, and real-time feedback ensure that potential issues are identified, helping you maintain operational integrity and security with confidence.

## Policy-based Dynamic Access Control Framework

- **Dynamic Configuration Options:** iTMS empowers organizations with granular attribute-based configuration tailored to your operational needs.
- **Roles:** Define customized user tools to control identity authentication with precision.
- **Departments:** Configure permissions based on department specific requirements.
- **Doors:** Easily map and manage door connections, including how each door interfaces with biometric devices.
- **Time Schedules:** Set specific timeframes for device activity to align with working hours, shifts, or security protocols.
- **Rules:** Defines the logic that determines whether authentication is granted or denied, based on the evaluation of attributes. denied, based on the evaluation of attributes.



iDentityCheck™ delivers unmatched accuracy by making it virtually impossible to enroll duplicate iris or face records. With advanced biometric matching at its core, it ensures every identity in your system is truly unique—eliminating redundancy and strengthening trust.

## Intuitive Settings Dashboard

Upon logging into iTMS, users can access a streamlined settings menu via the gear icon - designed for fast, efficient system management:

- **Main:** Quickly navigate to all sections from a centralized starting point.
- **User Info:** Input and manage user-specific details with ease.
- **Wiegand/OSDP:** Configure industry-standard protocols for secure hardware integration.
- **Webhooks:** Enable real-time data sharing by triggering automatic updates between applications when key events occur.

IRIS ID AUTHORIZED RESELLER



Iris ID Systems, Inc.  
8 Clarke Drive, Cranbury, NJ 08512, USA  
Tel. 609-819-IRIS(4747) Fax. 609-819-4736  
[www.irisid.com](http://www.irisid.com)



© Iris ID Systems, Inc. All rights reserved. Design and specifications subject to change.